

ICOM  
22974

B5241F ← DIP ←

5V 8V

5V 8V

HP201

HP151

HP401

HP481

5V 8V

HP601

HP701

HP201

HP483

HP601

L30A

R32

R35

L30B

HP201

HP601

HP151

L328

L358

L378

J851 MKR

J851

J851

J851

J851

J851

J851

J851

J851

J851

J851

J851

J851

J851

J851

J851

J851

J851

J851

J851

J851

J851

J851

J851

J851

J851

J851

J851

J851

J851

J851

J851

J851

J851

J851

J851

J851

J851

J851

J851

J851

J851

J851

J851

J851

J851

J851

J851

J851

J851

J851

J851

J851

J851

J851

J851

J851

J851

J851

J851

J851

J851

J851

J851

J851

J851

J851

J851

J851

J851

J851

J851

J851

J851

J851

J851

J851

J851

J851

J851

J851

J851

J851

J851

J851

J851

J851

J851

J851

J851

J851

J851

J851

J851

J851

J851

J851

J851

J851

J851

J851

J851

J851

J851

J851

J851

J851

J851

J851

J851

J851

J851

J851

J851

J851

J851

J851

J851

J851

J851

J851

J851

J851

J851

J851

J851

J851

J851

J851

J851

J851

J851

J851

J851

J851

J851

J851

J851

J851

J851

J851

J851

J851

J851

J851

J851

J851

J851

J851

J851

J851

J851

J851

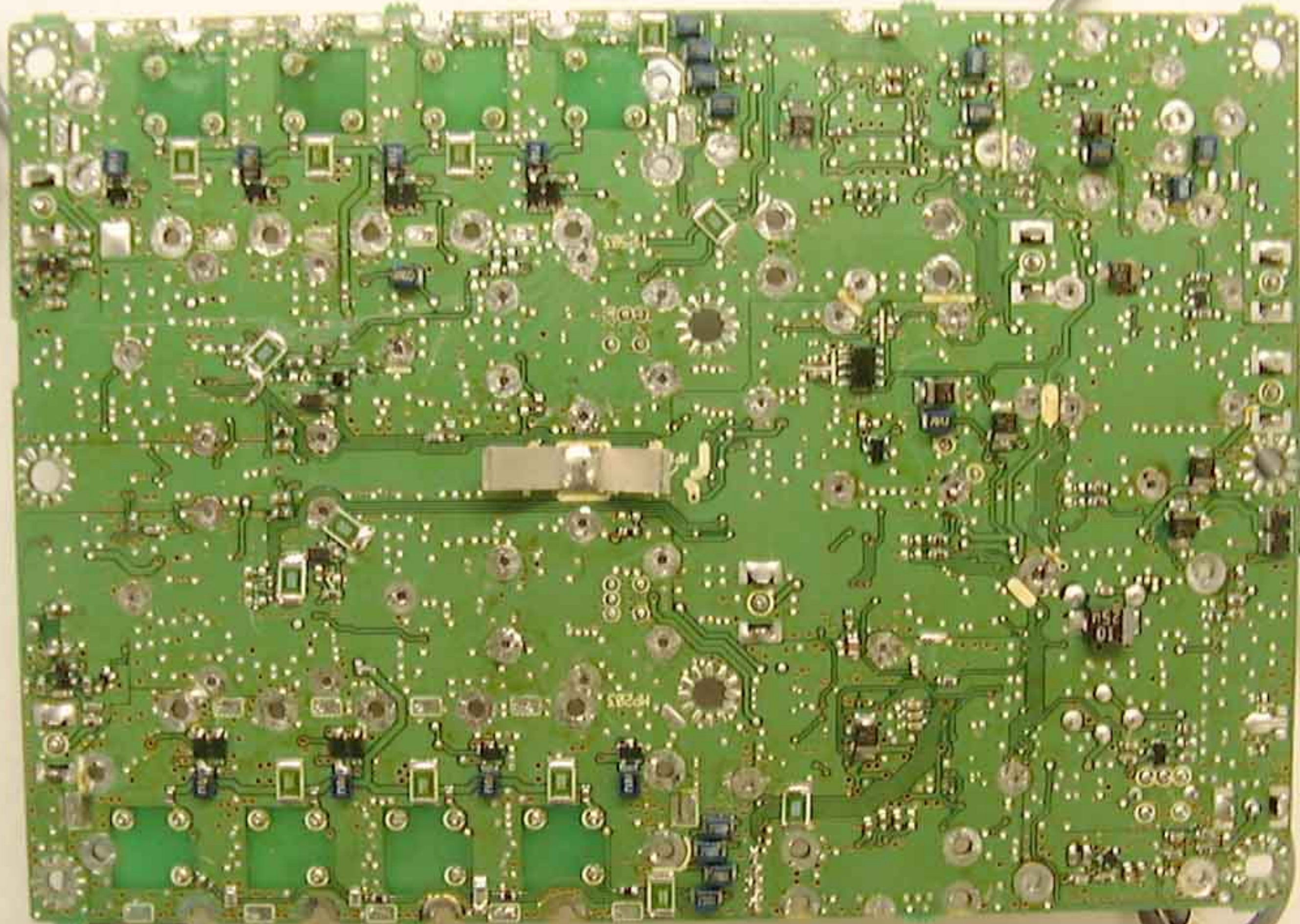
J851

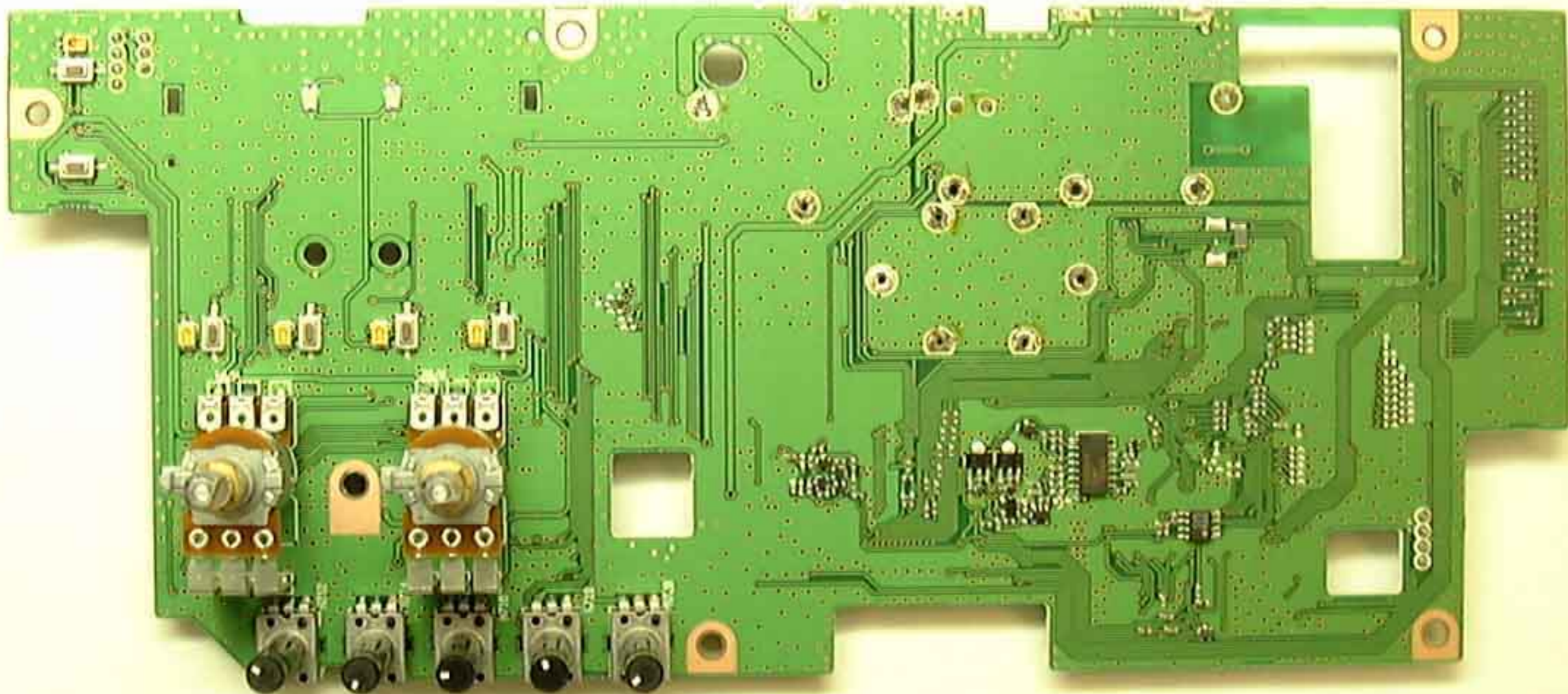
J851

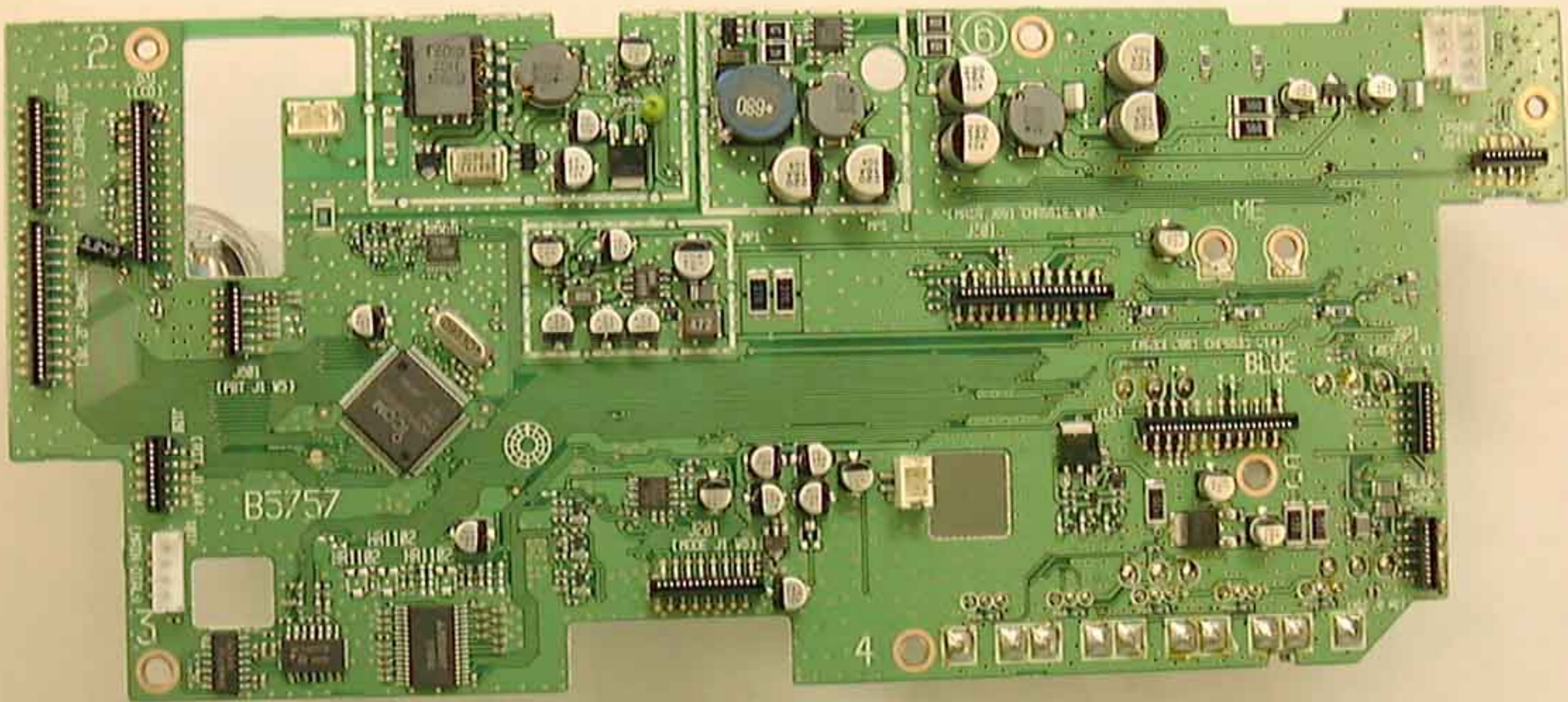
J851

J851

J851

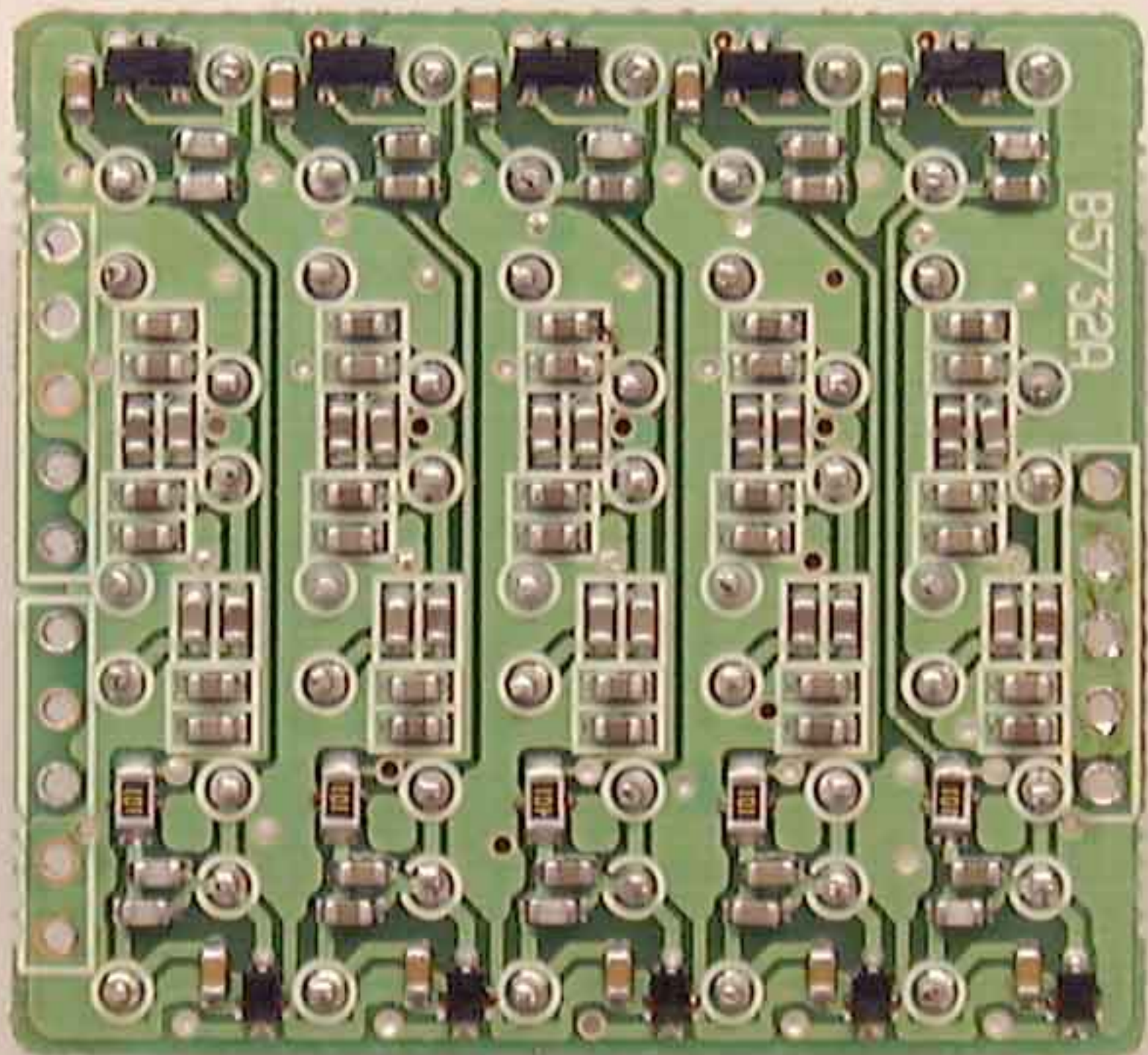




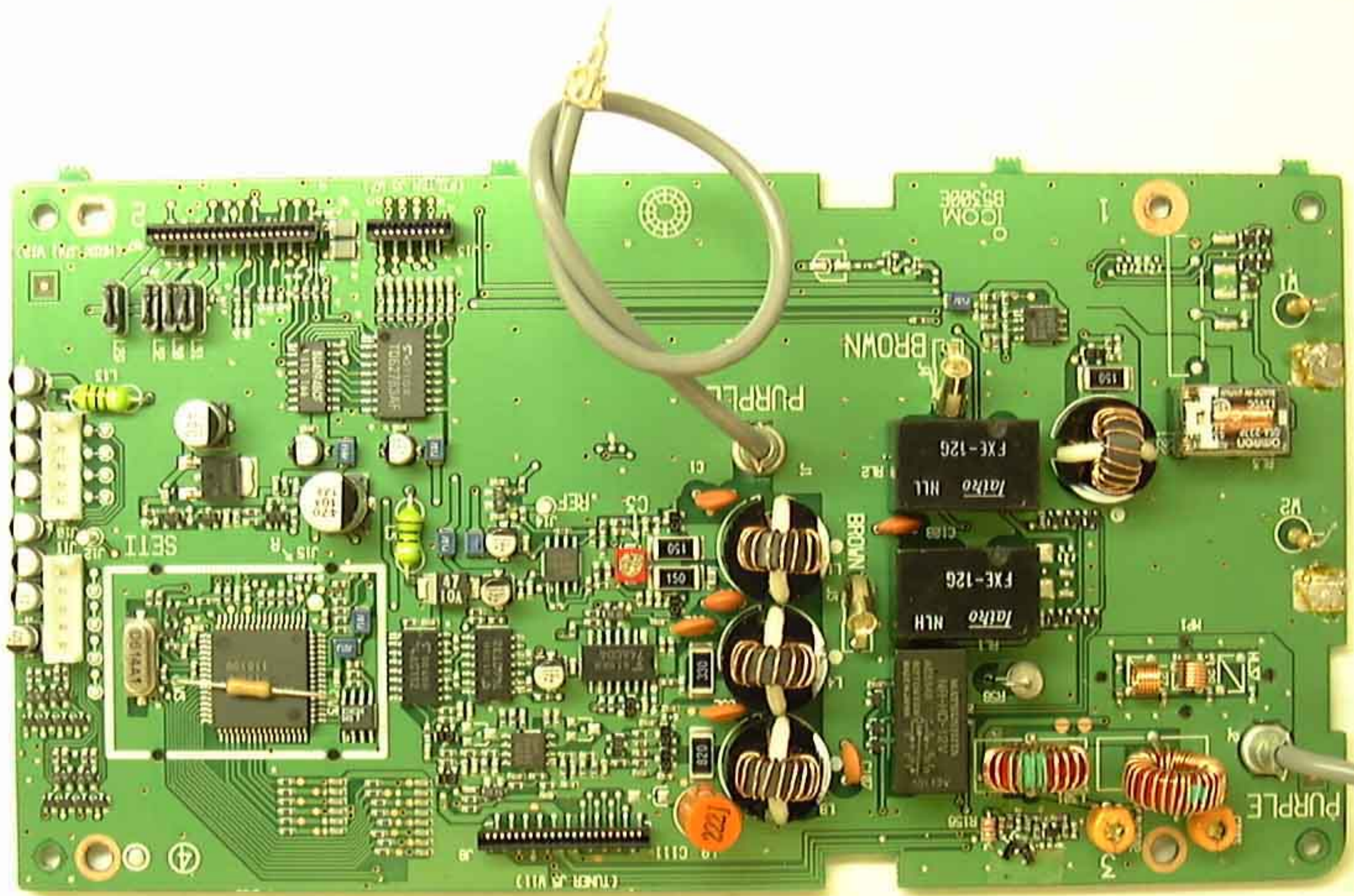


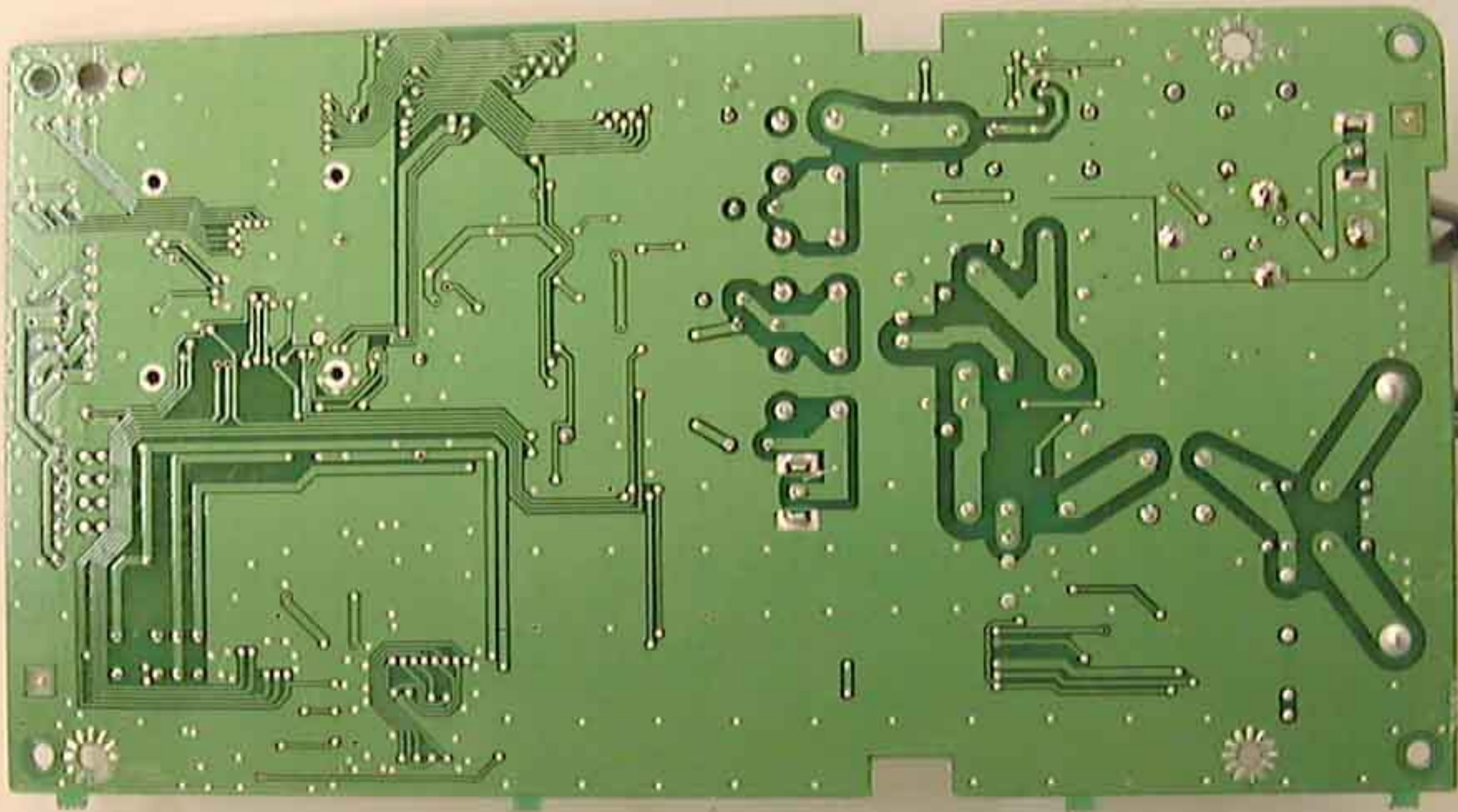


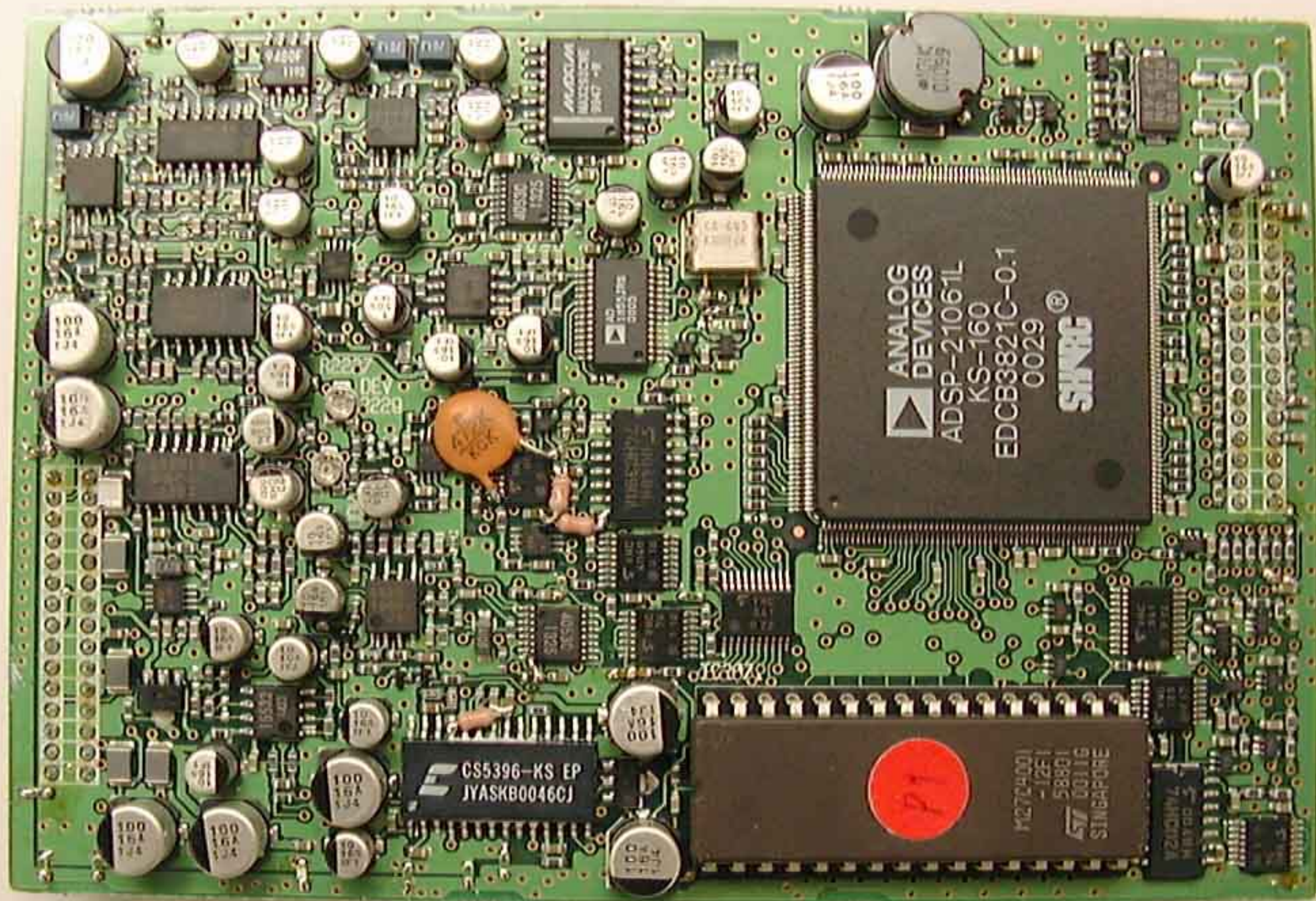
B57/32A











ANALOG DEVICES  
ADSP-21061L  
KS-160  
EDCB3821C-0.1  
SINC®

CS5396-KS EP  
JYASKB0046C

P1

M27C4001  
-125E1  
58801  
SINGAPORE

100 16A 134

100 16A 134

100 16A 134

100 16A 134

100 16A 134

100 16A 134

100 16A 134

100 16A 134

100 16A 134

100 16A 134

100 16A 134

100 16A 134

100 16A 134

100 16A 134

100 16A 134

100 16A 134

100 16A 134

100 16A 134

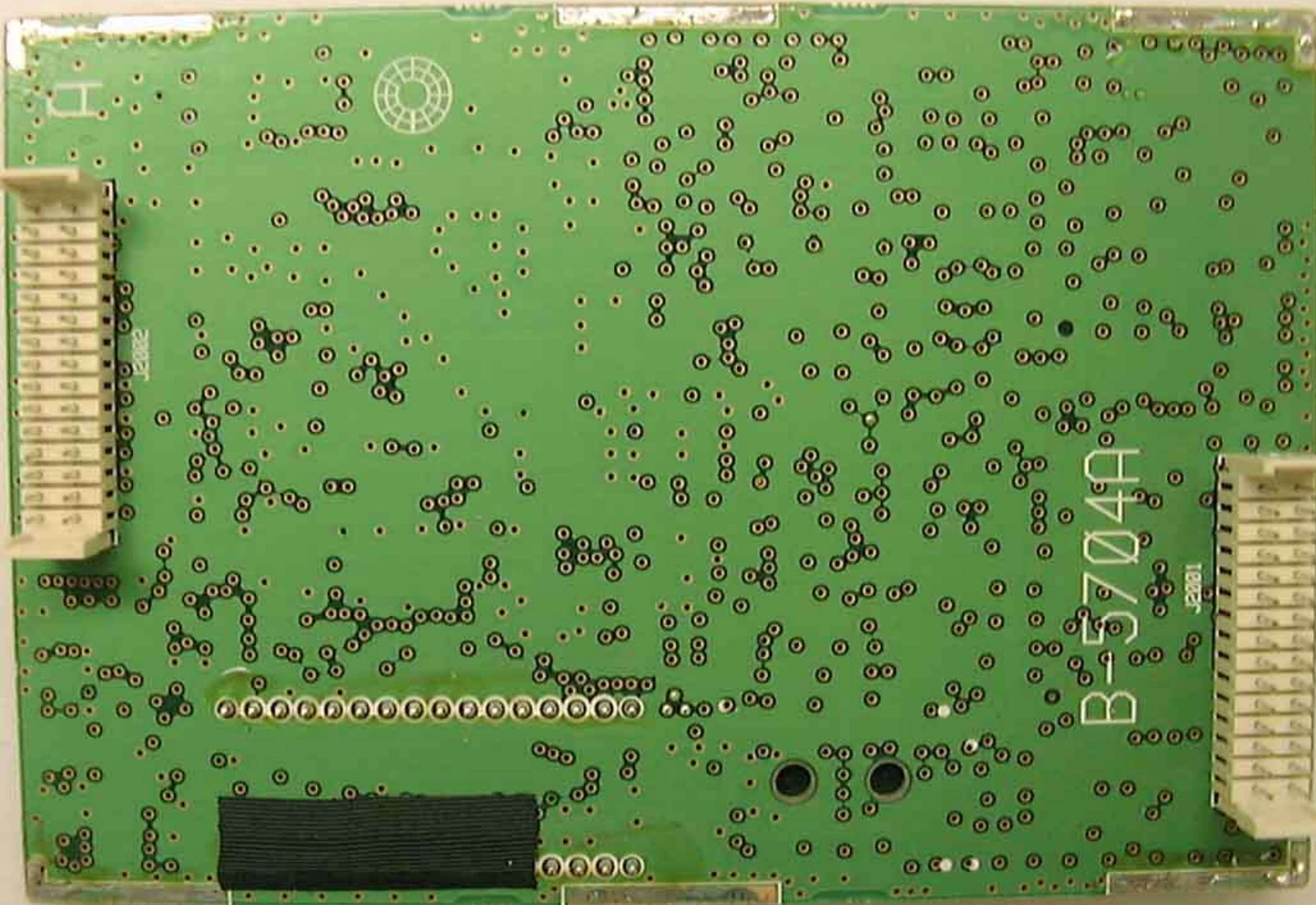
100 16A 134

100 16A 134

100 16A 134

100 16A 134

100 16A 134

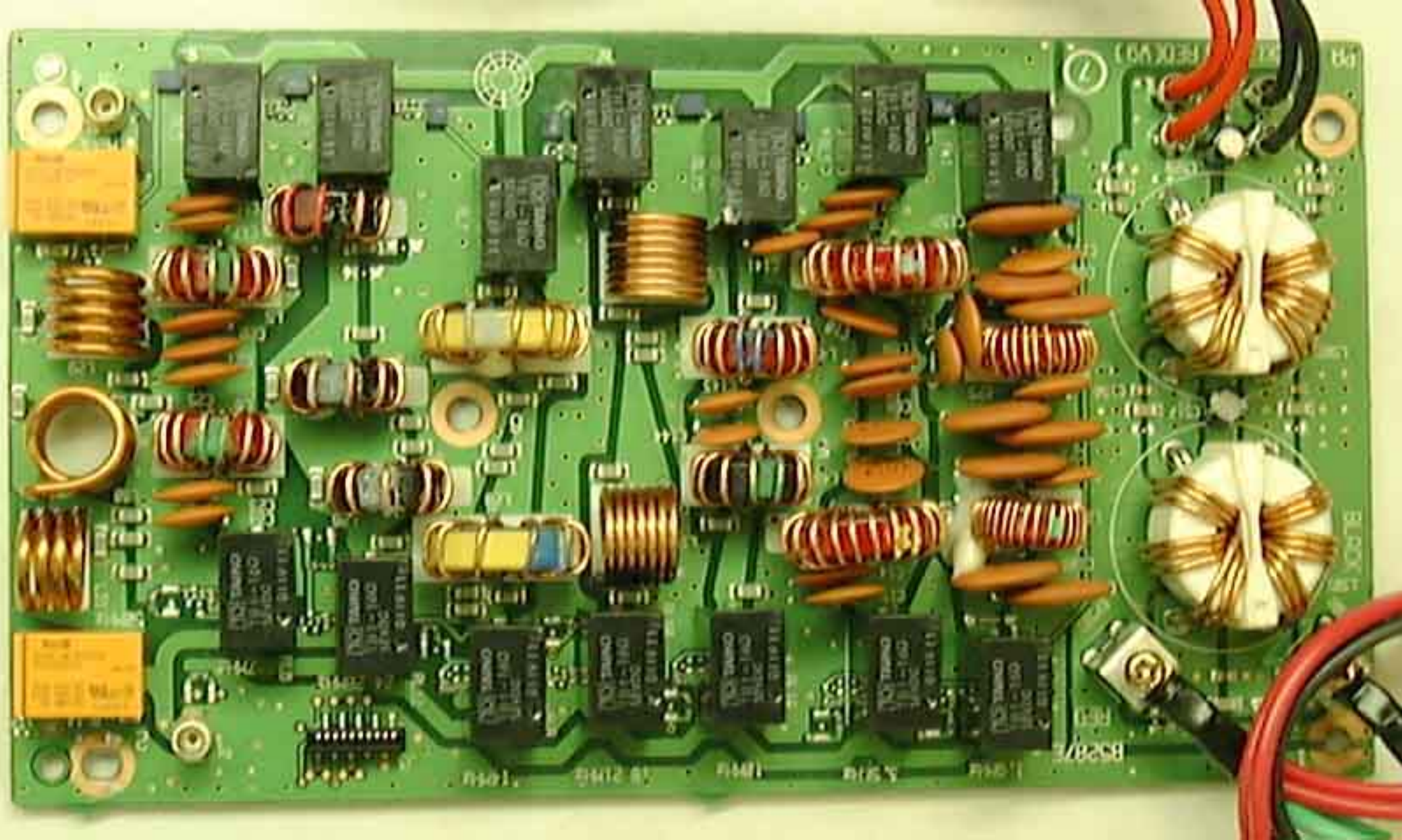


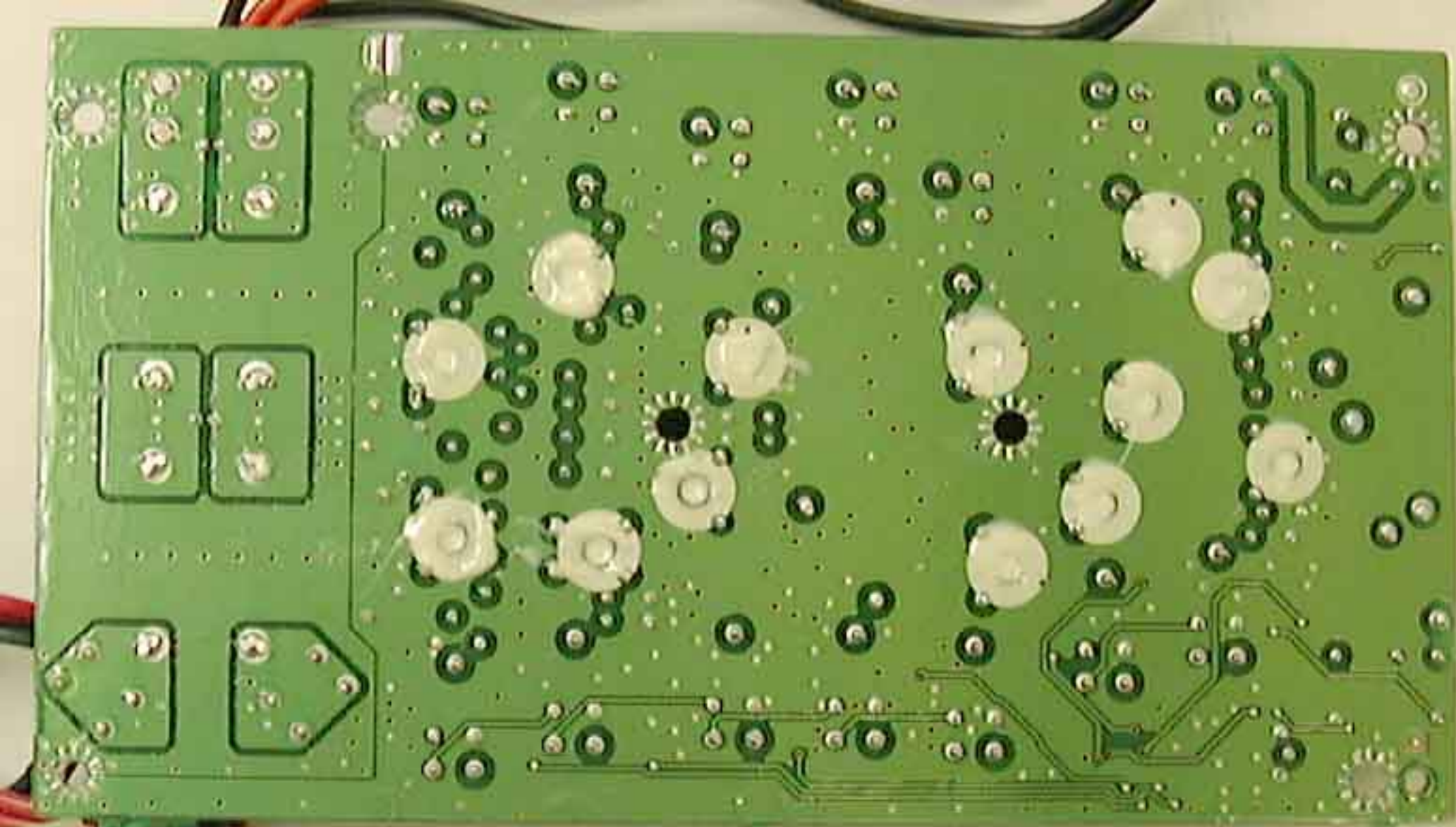
B-5704A

J2201

J2202

H

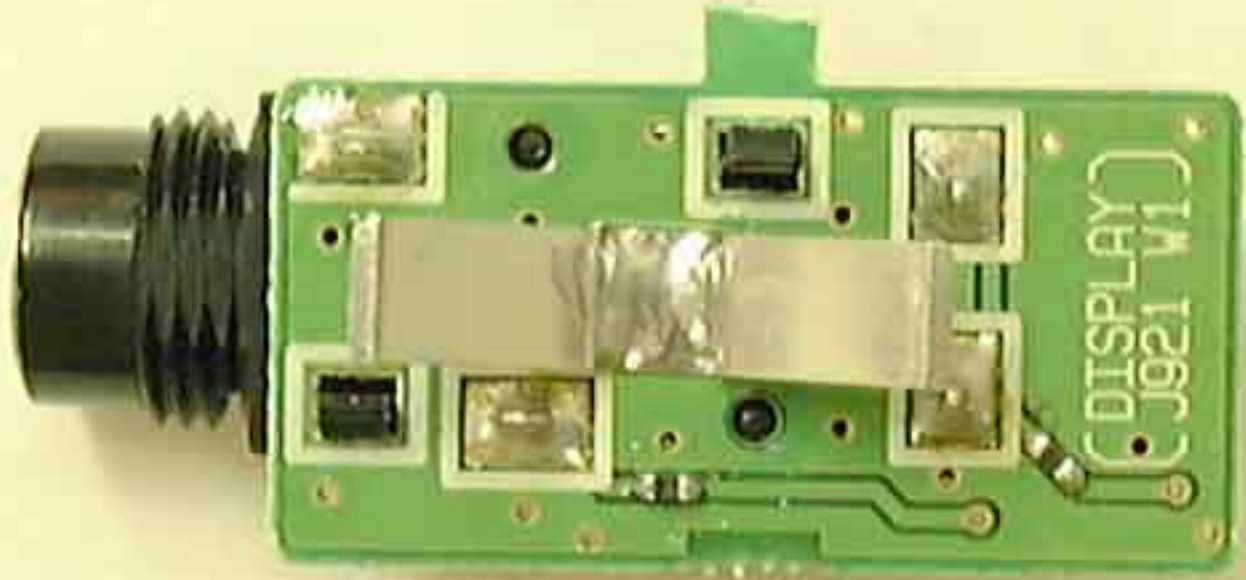




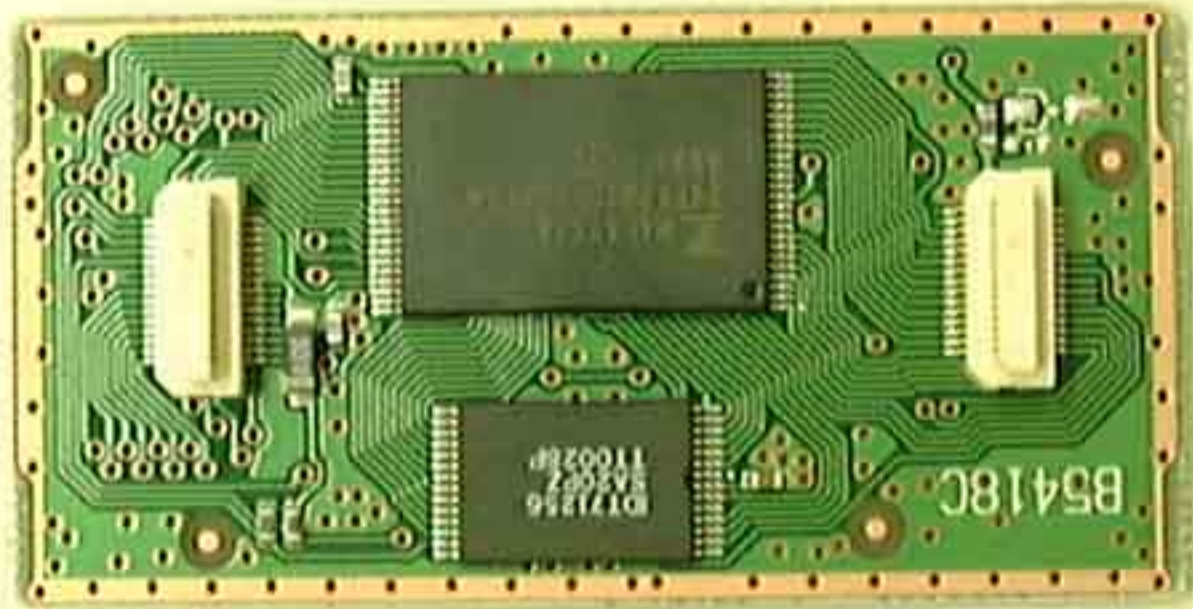


J2

B5406A KEY

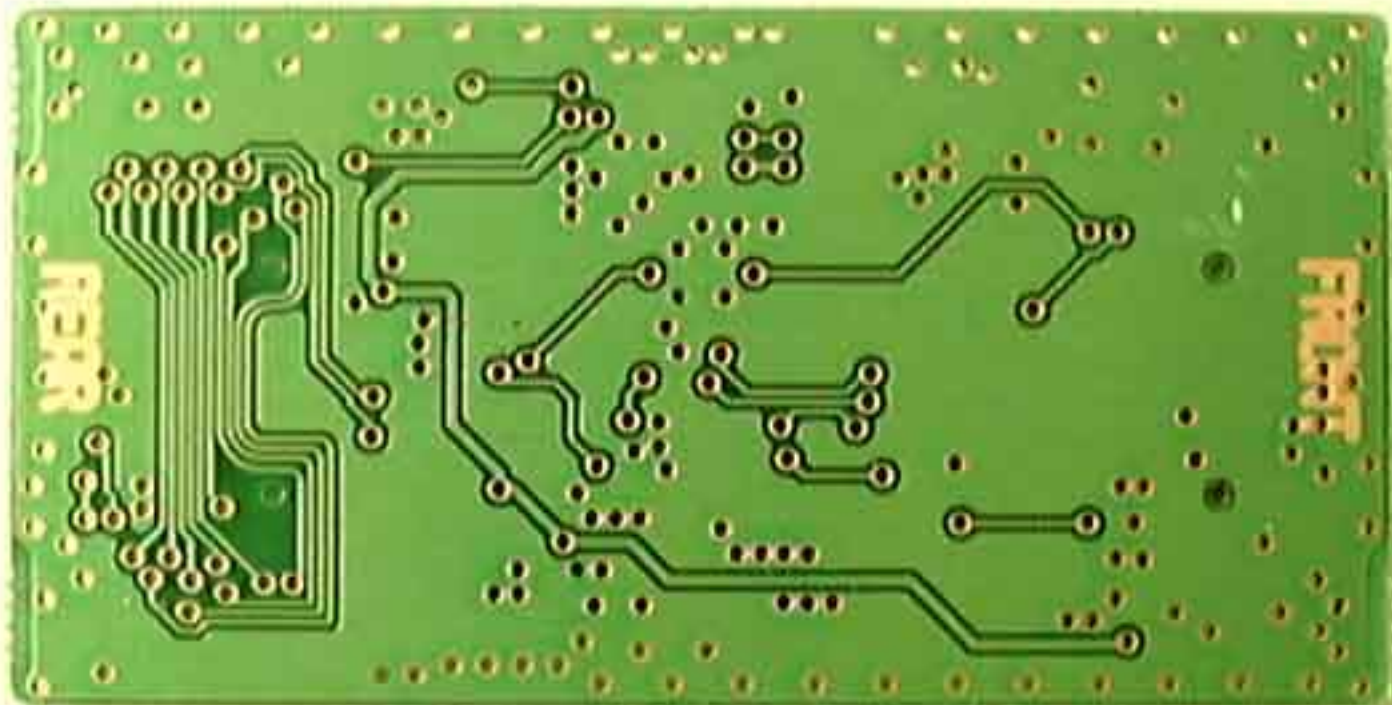


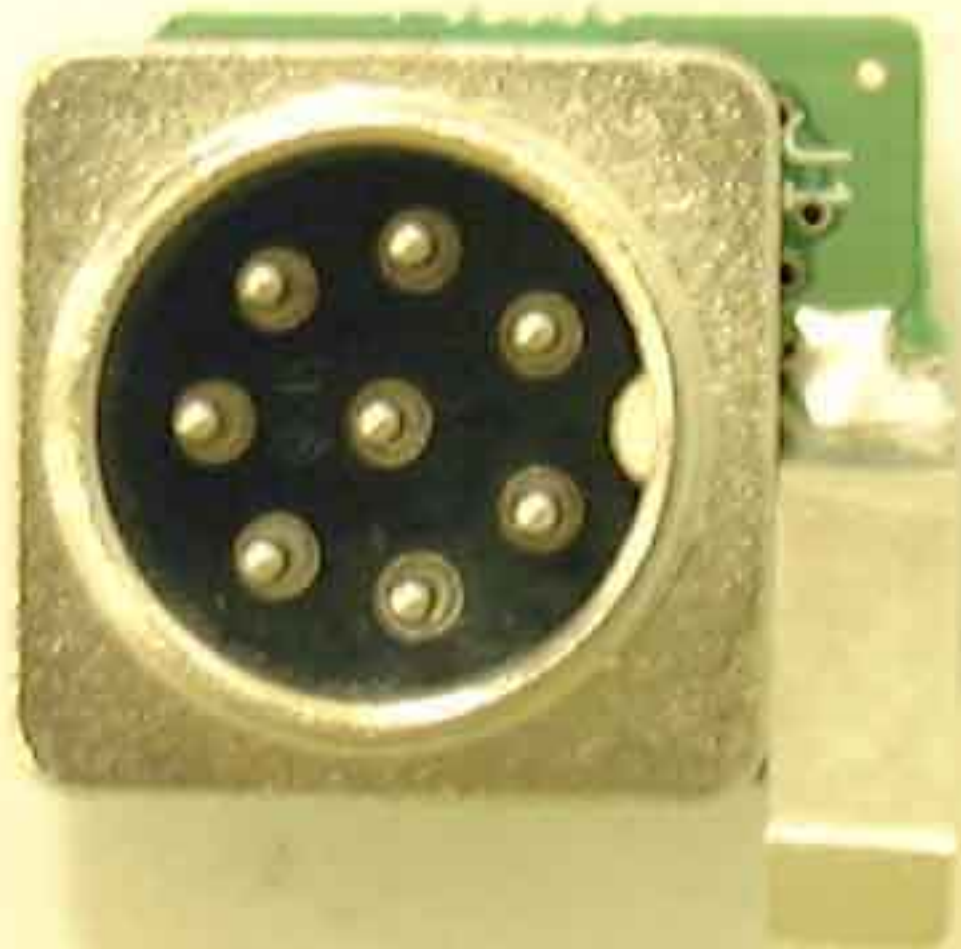


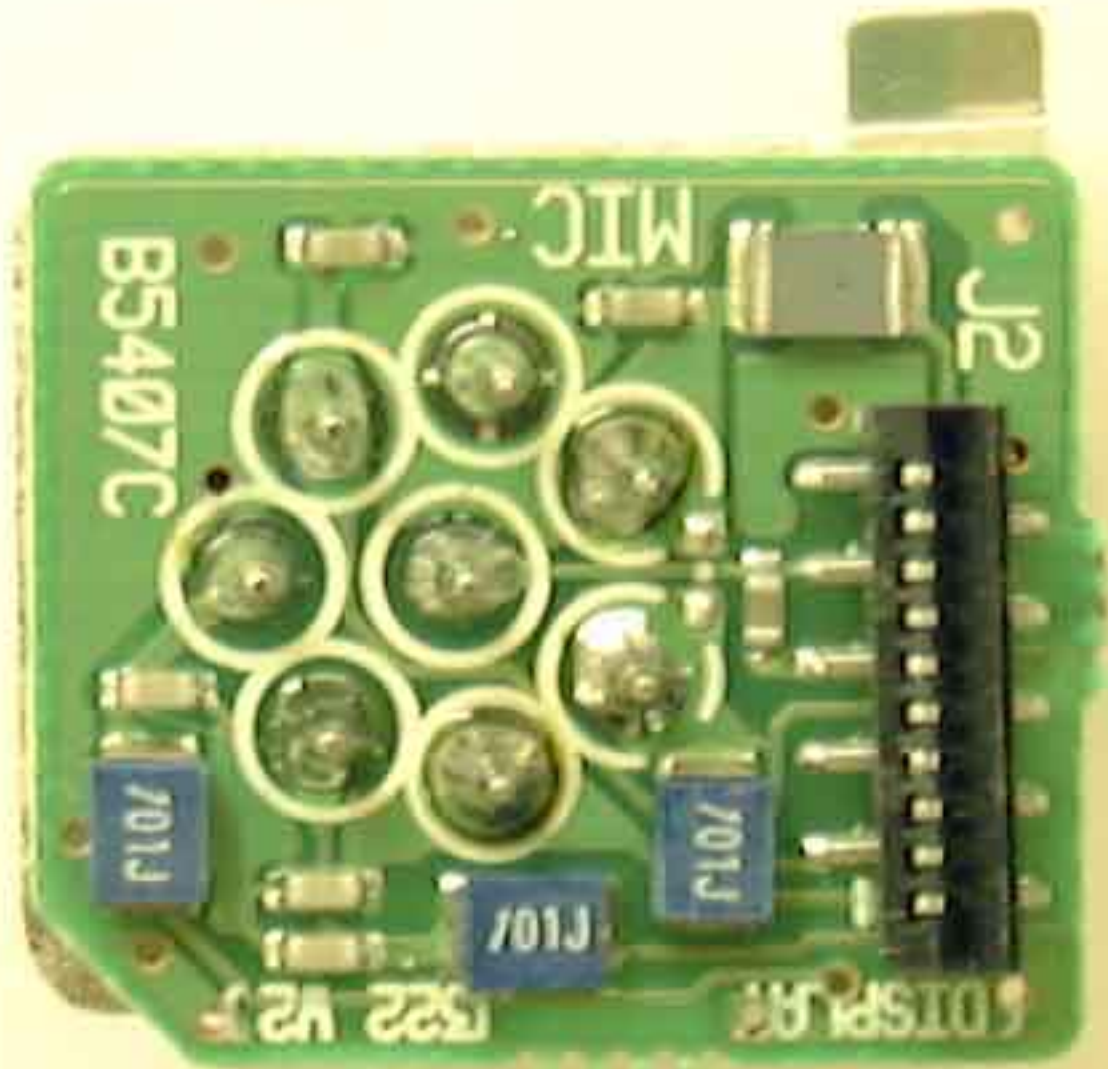


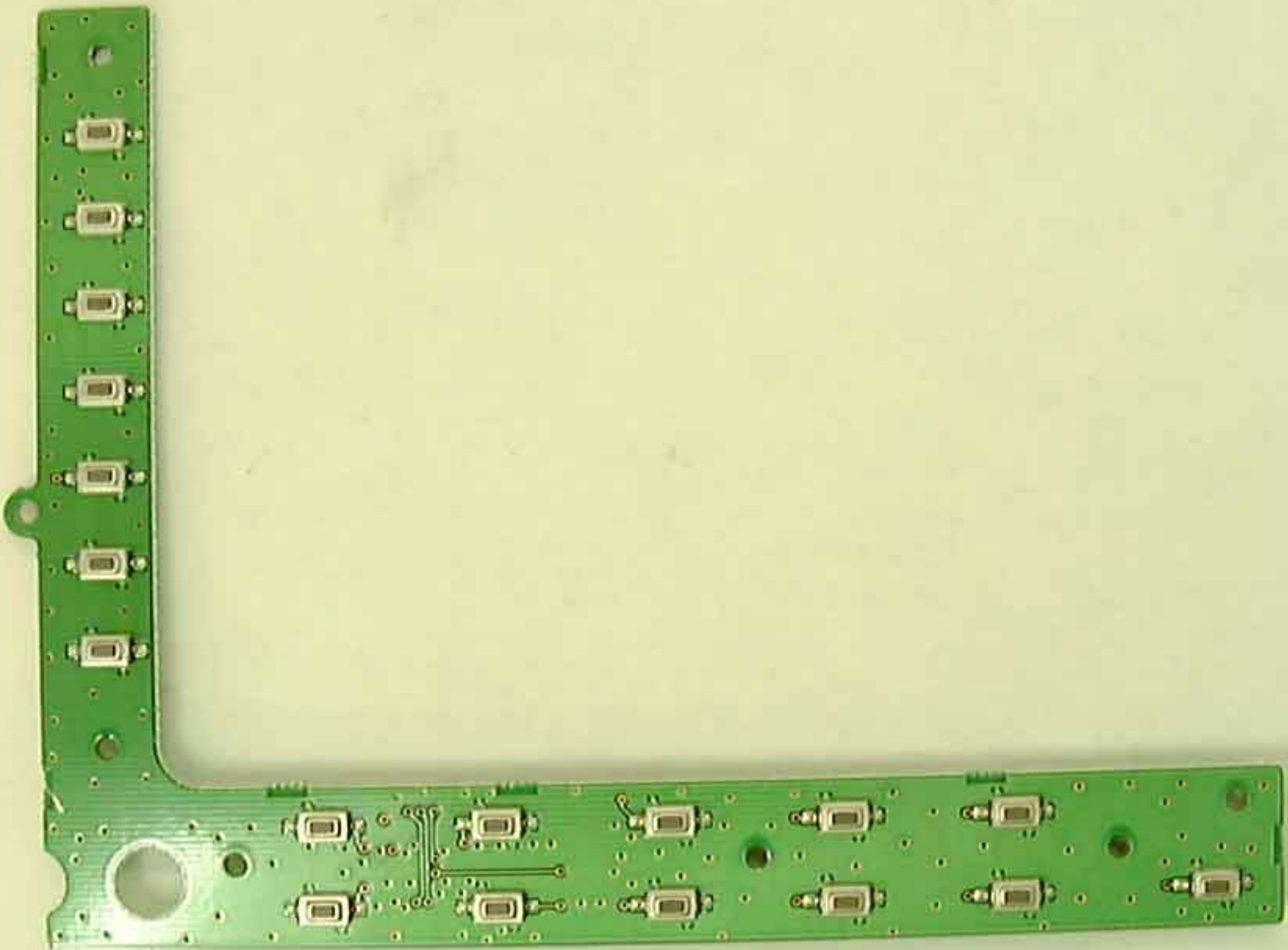
B5418C

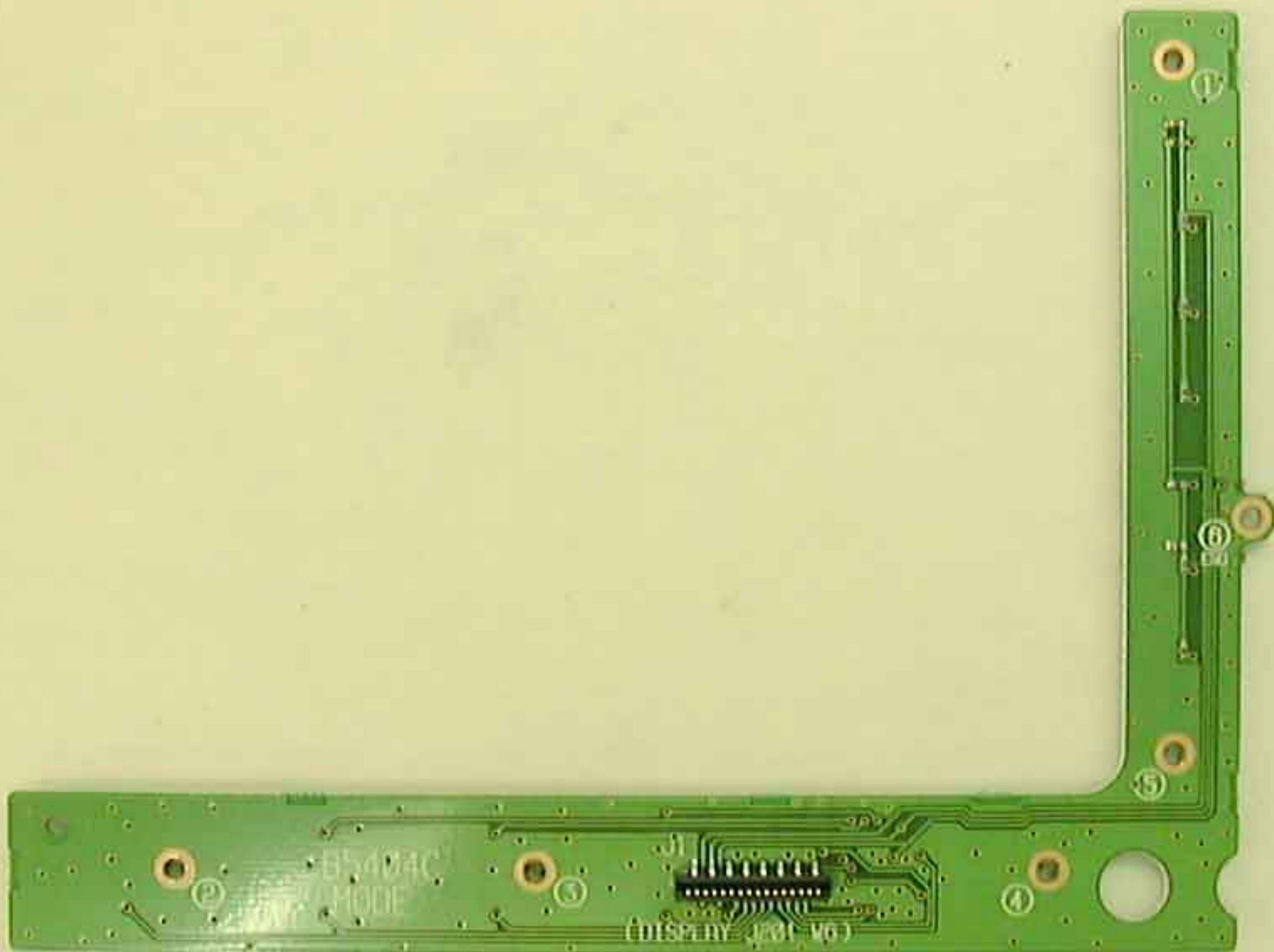
0171256  
5A2007  
110028P













W 310  
MS

NAIS  
HY0202  
7001  
ADVISOR  
V6

C1971  
82AY

C1972  
82AA-B

LR-143

LR393

J2 (RED)

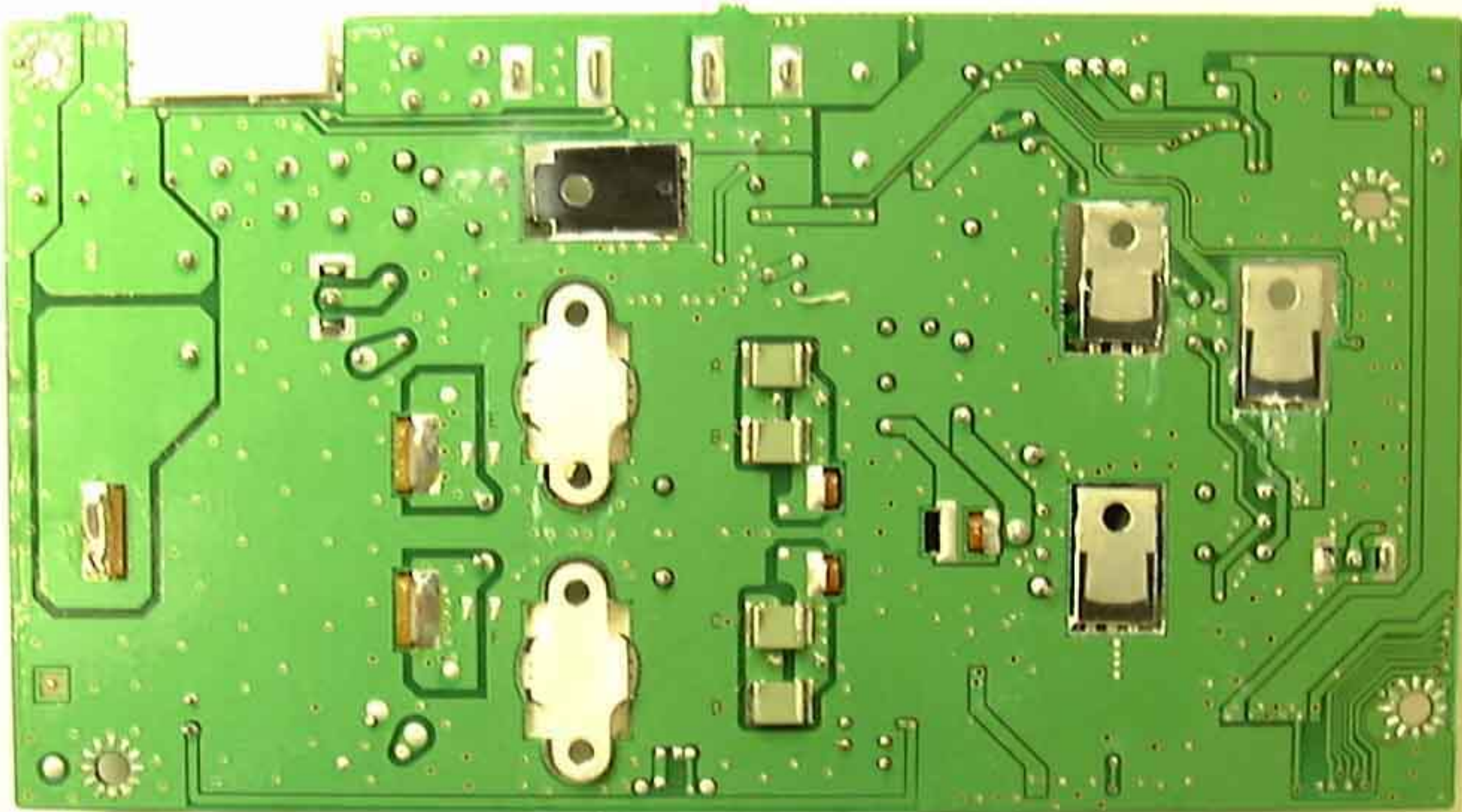
L6

R

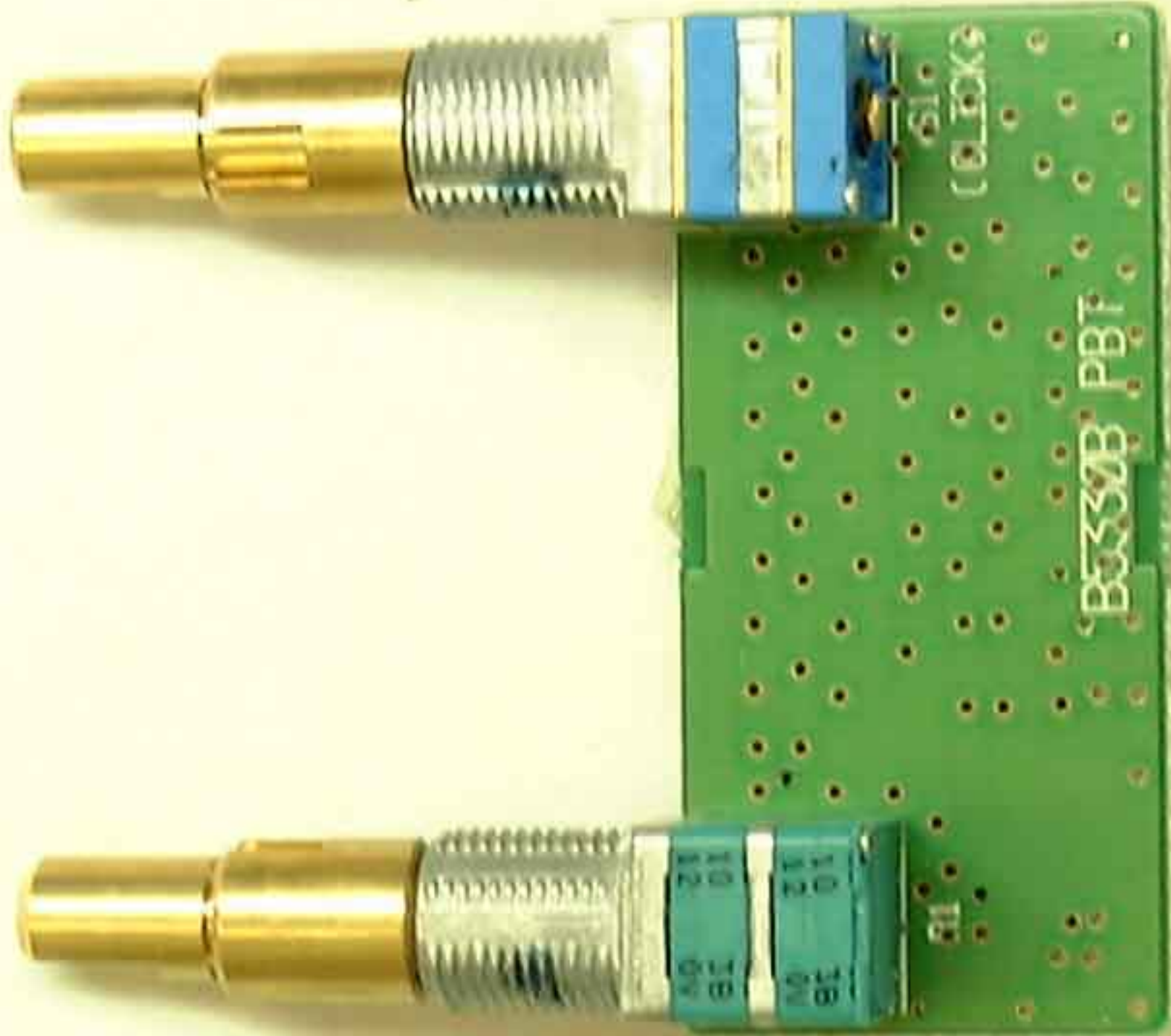
BK

ICOM

ICOM  
IC294E





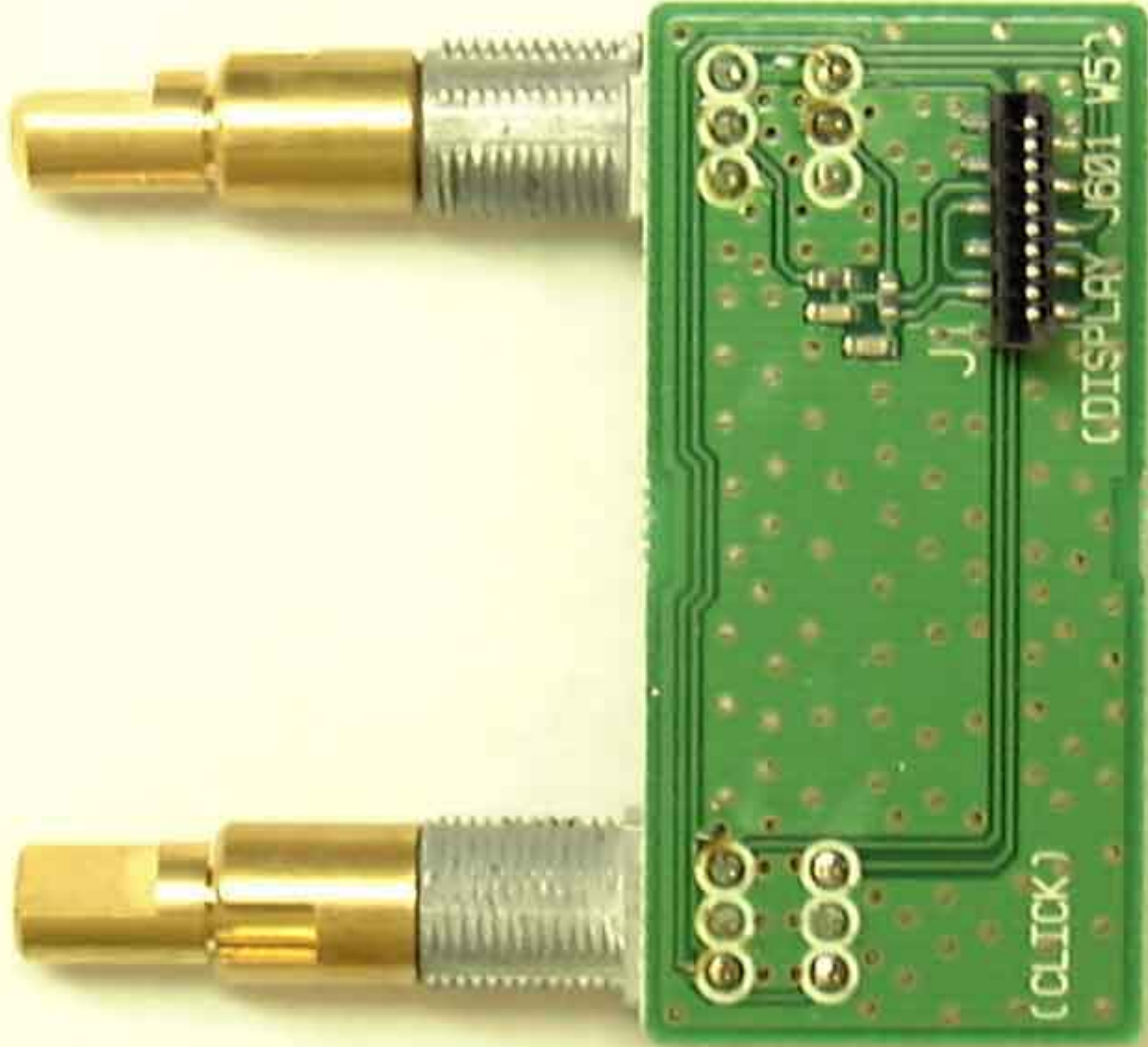


61  
BLOCK

B0330B PBT

79

78  
77  
76  
75  
74  
73  
72  
71  
70



(CLICK)

(DISPLAY J601 V5)

B5331B

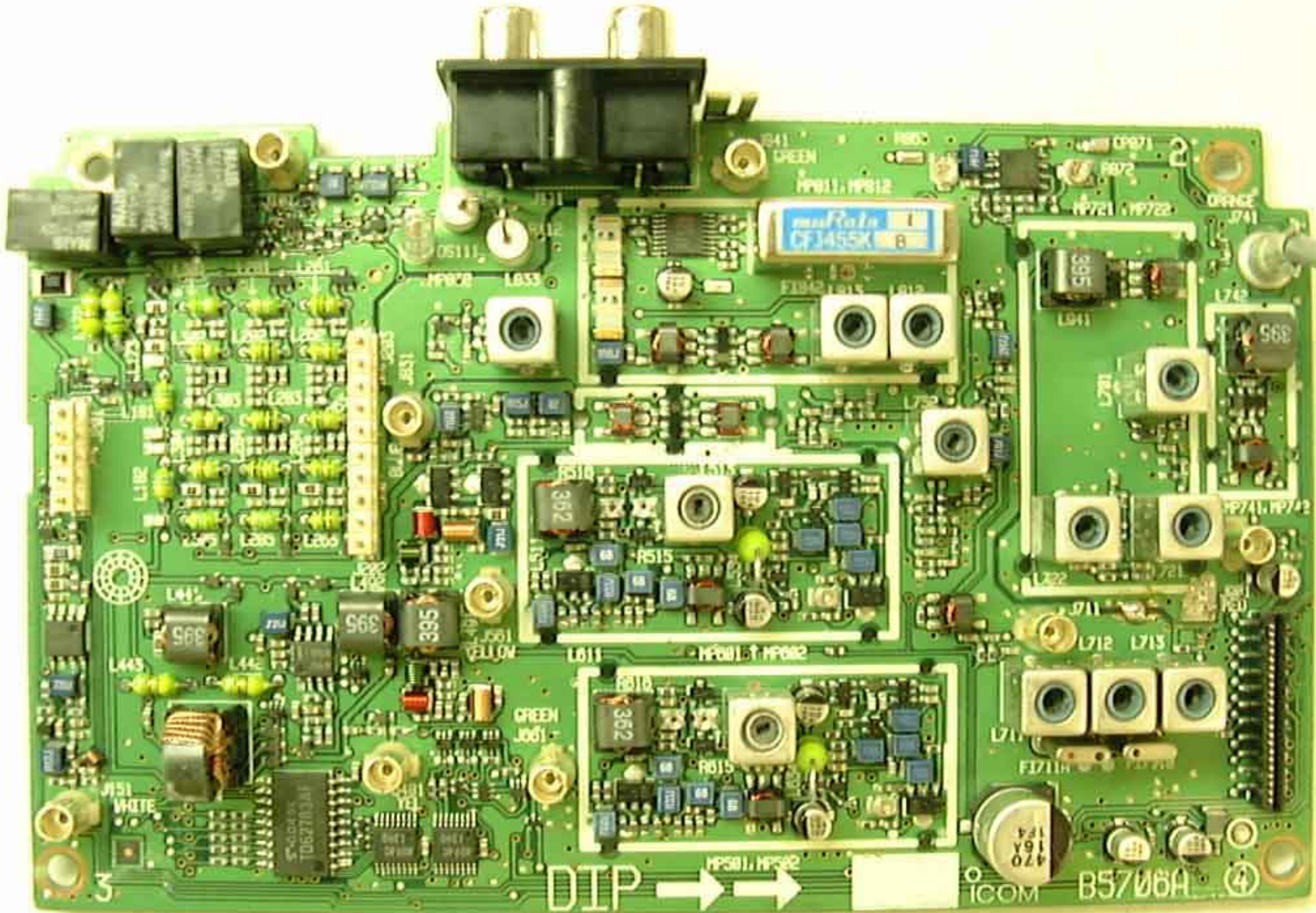


LINE



(DISPENSE)  
(J941-M3)





DIP → →

ICOM B5706A ④

muRata  
CF3455K

470  
16A  
104

MAKING  
ELECTRONIC  
EQUIPMENT

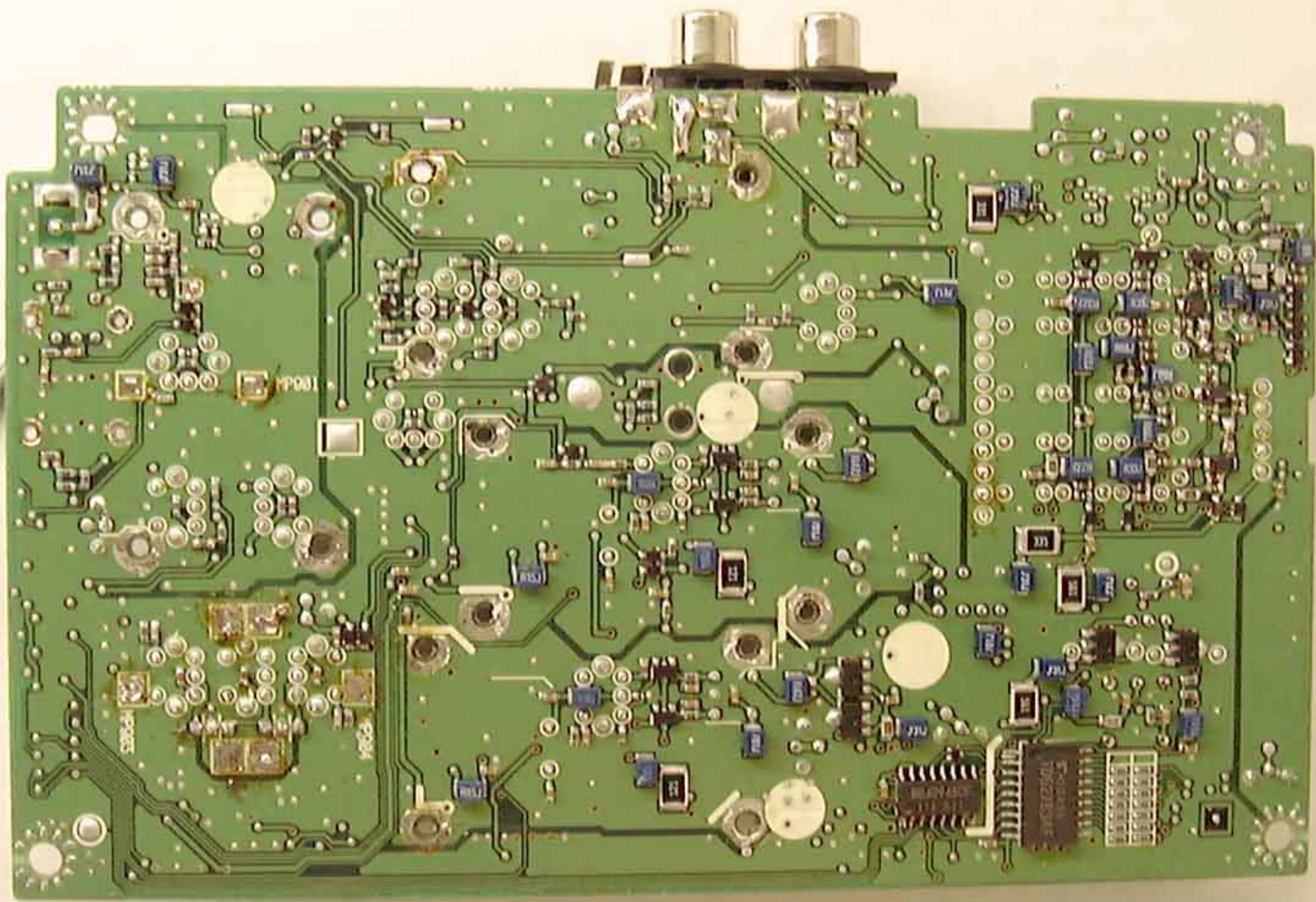
ICOM  
T052703A1

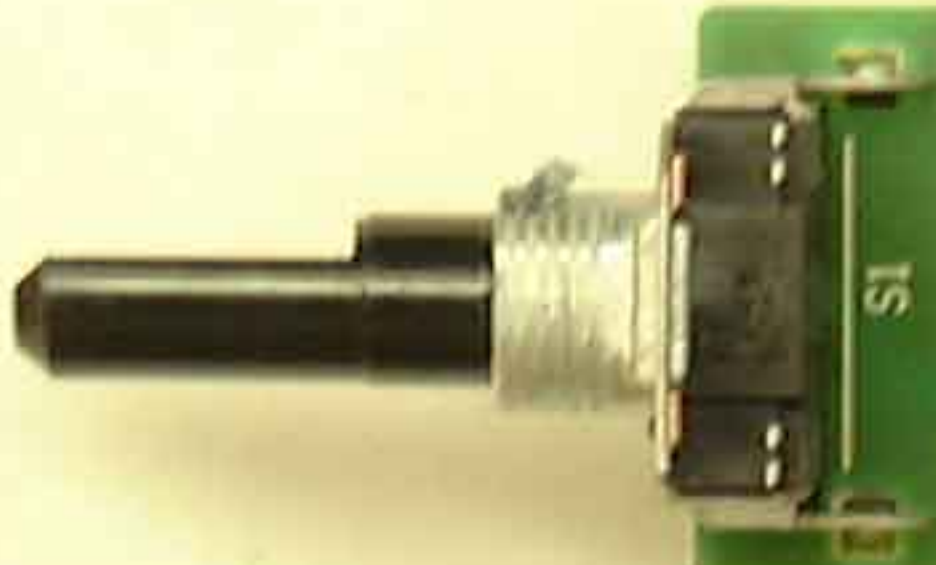
GREEN  
J061

WHITE  
J051

3

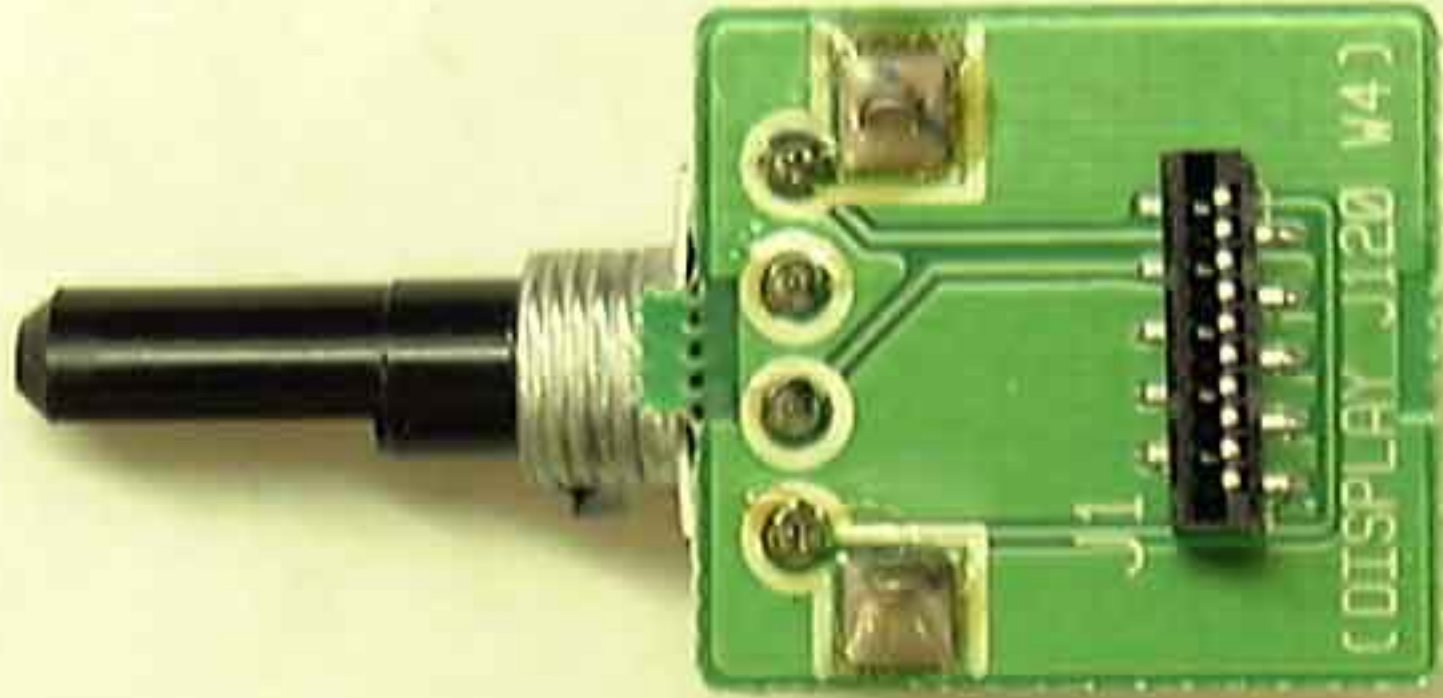
4



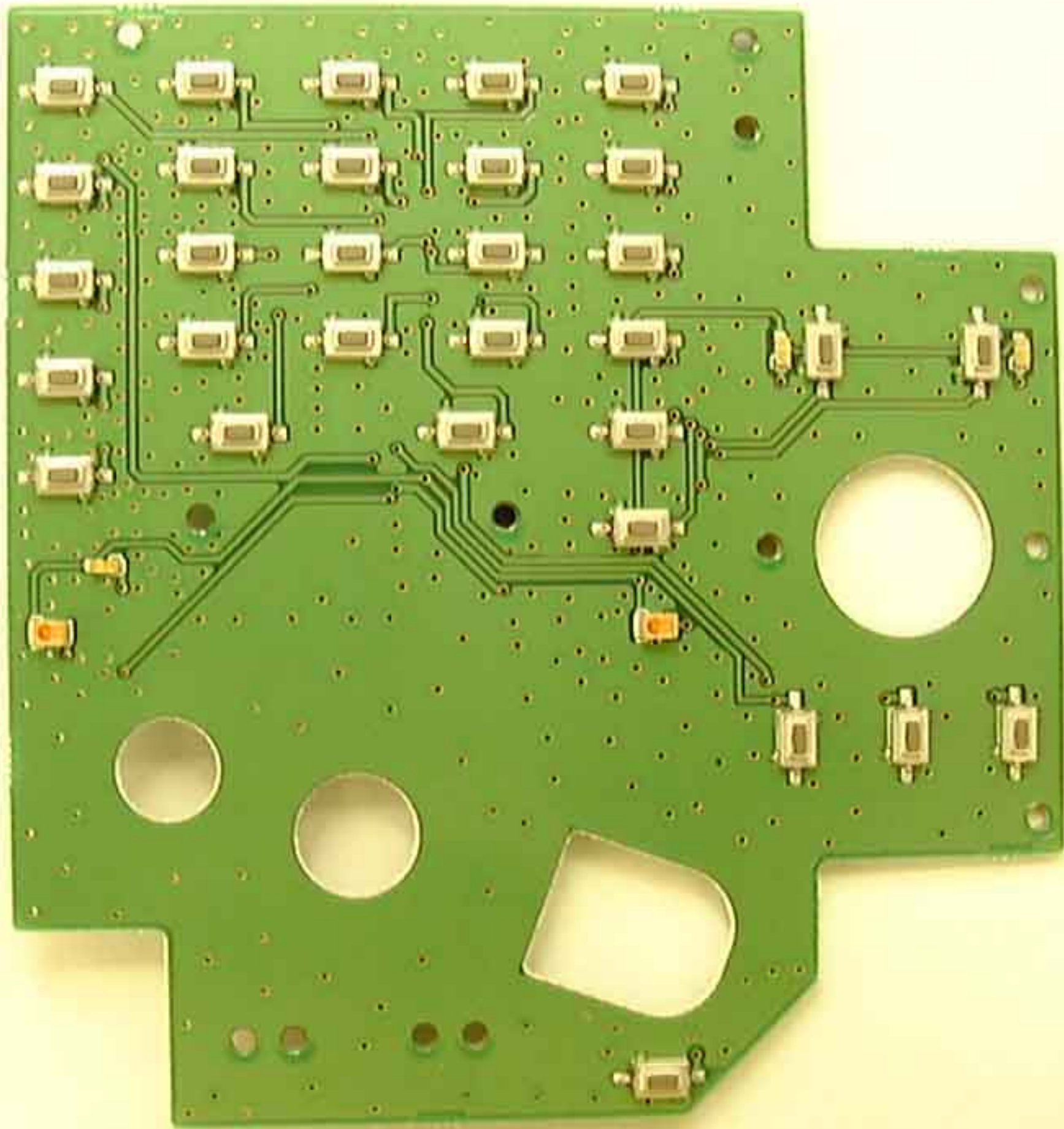


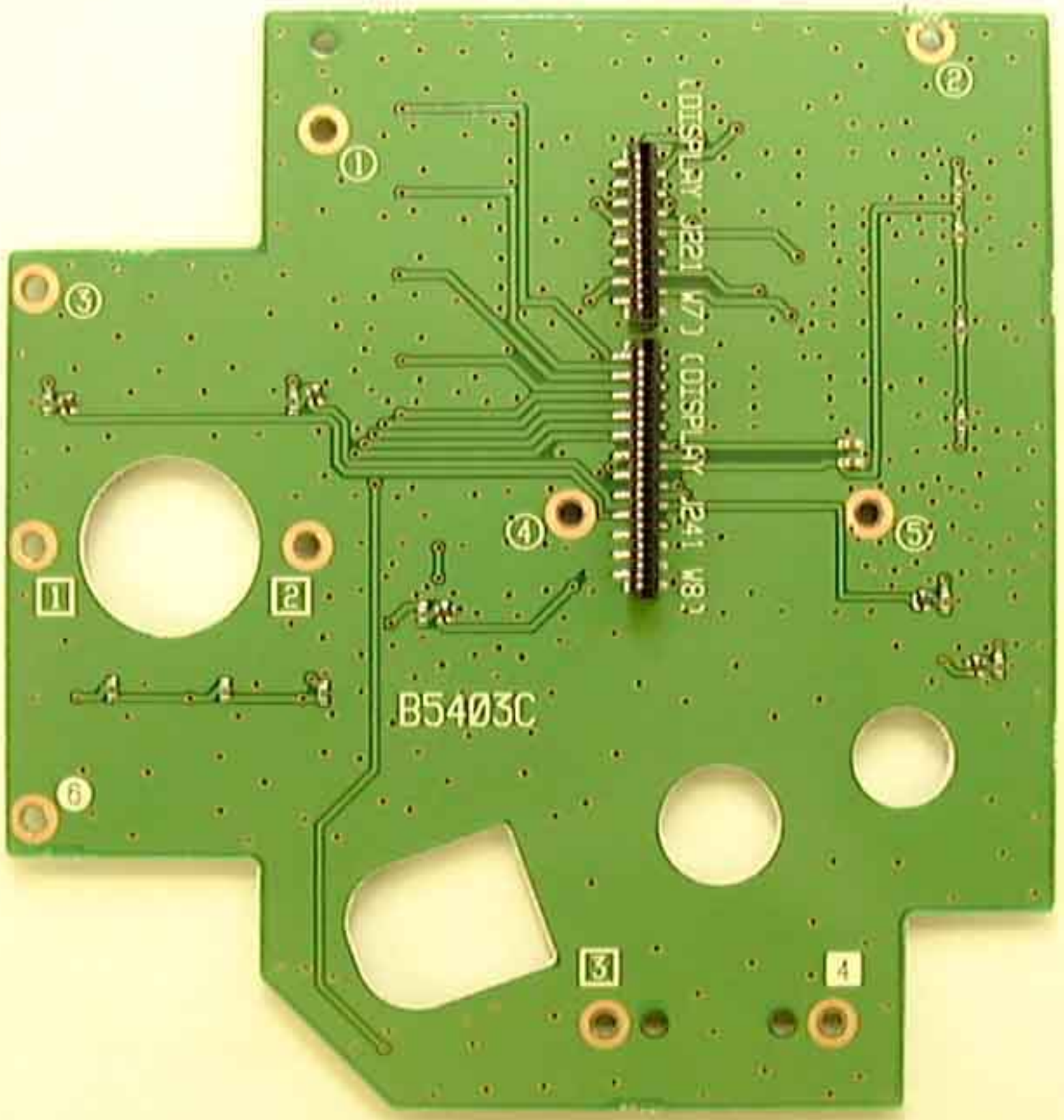
SI

ICOM  
B5405A  
R1T









(DISPLAY J221 W7) (DISPLAY J241 W8)

B5403C

1

2

3

4

5

1

2

6

3

4

